

ANSWERS FOR KOOCHICHING COUNTY CROSSWORD

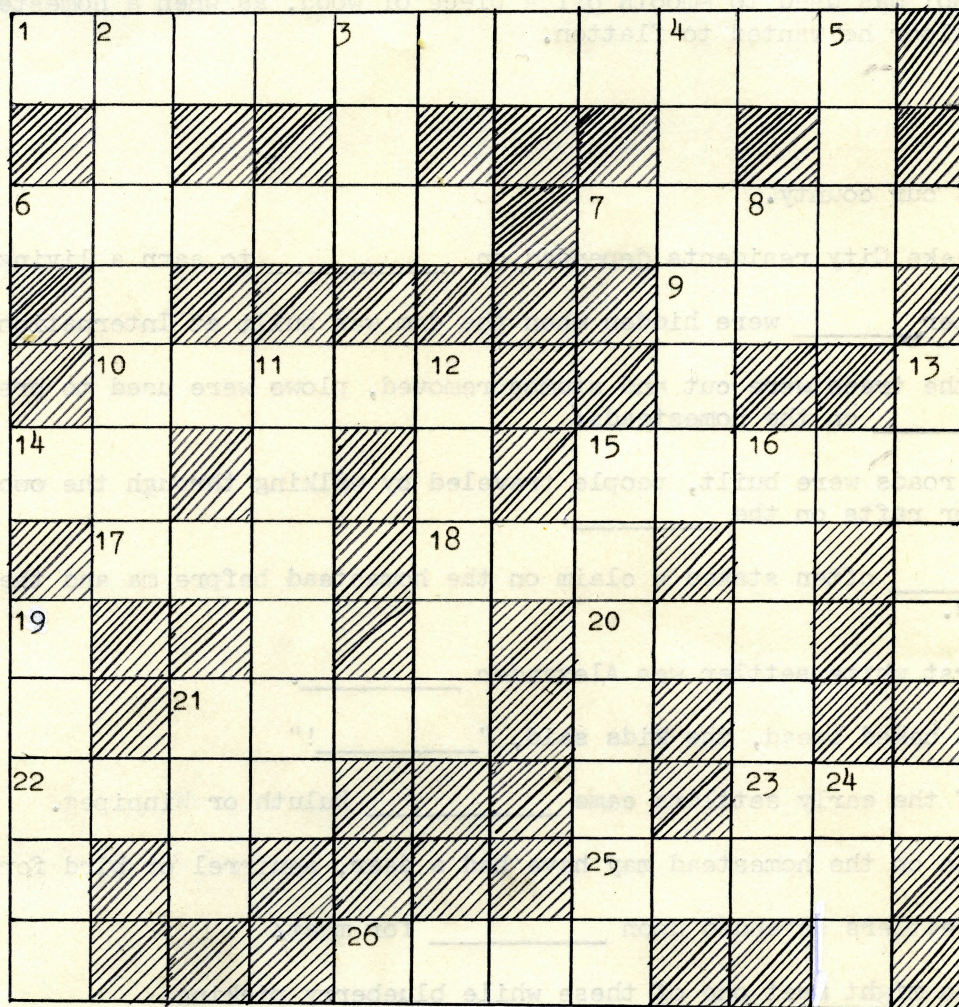
DOWN:

2. Ojibway
3. Hen
4. Itasca
5. Gold
8. Lo
11. Timber
12. River
13. Cree
15. Baptist
16. Kettle
19. Labor
21. Day
24. Adz

ACROSS:

1. Koochiching
6. Mining
7. Falls
9. Sod
10. Water
14. Pa
15. Baker
17. Yum
18. Via
20. Pet
21. Deer
22. Bear
23. Lag
25. Sled
26. Mist

KOOCHICHING COUNTY CROSSWORD



DOWN:

2. Indians who aided the Voyageurs in the fur trade.
3. Pioneers felt fortunate if they had one (or a flock) of these.
4. Our county used to be part of _____ county.
5. What attracted people to Rainy Lake City?
8. An old expression, "_____ and behold..."
11. The _____ industry has been the backbone of our county's economy.
12. The first church services in International Falls were held on the banks of the _____.
13. These Indians were living on the north side of Rainy River when the first explorers arrived.
15. The first church in International Falls was the _____ Church.
16. During the gold rush many people traveling to Rainy Lake City came via Duluth, Tower, and over water with a portage around _____ Falls.
19. It took much hard _____ to clear a homestead and develop a farm.

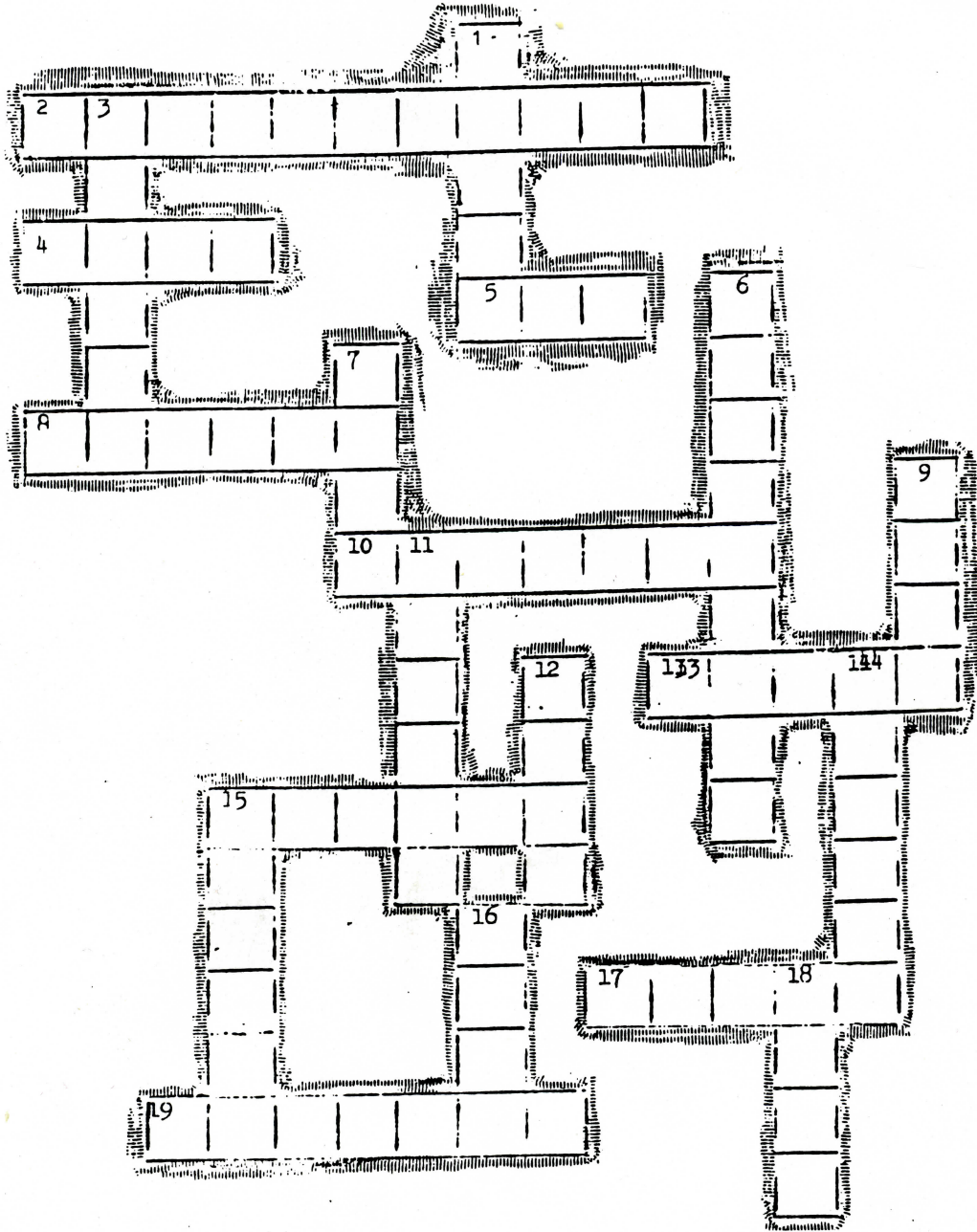
DOWN (cont'd):

24. This tool was used to smooth off a piece of wood, as when a homesteader had a log floor he wanted to flatten.

ACROSS:

1. Name of our county.
6. Rainy Lake City residents depended on _____ to earn a living.
7. The water _____ were hidden when the dam was built at International Falls.
9. After the trees were cut and stumps removed, plows were used to break the _____ on the homesteads.
10. Before roads were built, people traveled by walking through the woods or on boats or rafts on the _____.
14. _____ often staked a claim on the homestead before ma and the kids arrived.
15. The first white settler was Alexander _____.
17. When ma baked bread, the kids said, " _____!"
18. Many of the early settlers came _____ Duluth or Winnipeg.
20. Children on the homestead may have had a deer, squirrel or bird for a _____.
21. Early settlers depended upon _____ for meat.
22. A person might meet one of these while blueberry picking.
23. The children might _____ behind on the long walk to school.
25. The winter ferry between International Falls and Fort Frances was a _____ pulled by dogs.
26. "Koochiching" is the Cree Indian word for _____ or rain.

QJIBWE INDIANS



An Indian (1)_____ once lived at the falls called (2)_____ on Rainy River. He was the leader of a band of the (3)_____ people. These people were not warlike and smoked the peace (4)_____ with the white men who came and built a (5)_____ trading post by Rainy River. They wore clothes decorated with (6)_____ quills and trapped (8)_____ to take to the trading post. Sometimes they would beat on a (7)_____ and dance a (15A)_____. They worshipped a Great Spirit whom they called (10)_____. In the summer, these people would (15D)_____ up the Rainy River to Rainy Lake in their (13)_____ bark (14)_____ when they went to pick blue (19)_____ on the islands. In the fall they hunted deer and moose with (12)_____ and (11)_____, and harvested wild (16)_____. In winter, their (18)_____ pulled their (17)_____ over the snow and ice of the lake. They were glad when spring came and they could travel to the sugar (9)_____ to camp and make maple sugar.

Answers to Ojibwe Indians Crossword

Down:

1. Chief
3. Ojibwe
6. Porcupine
7. Drum
9. Bush
11. Arrows
12. Bows
14. Canoes
15. Paddles
16. Rice
18. Dogs

Across:

2. Koochiching
4. Pipe
5. Fur
8. Beaver
10. Manitou
13. Birch
15. Powwow
17. Sleds
19. Berries